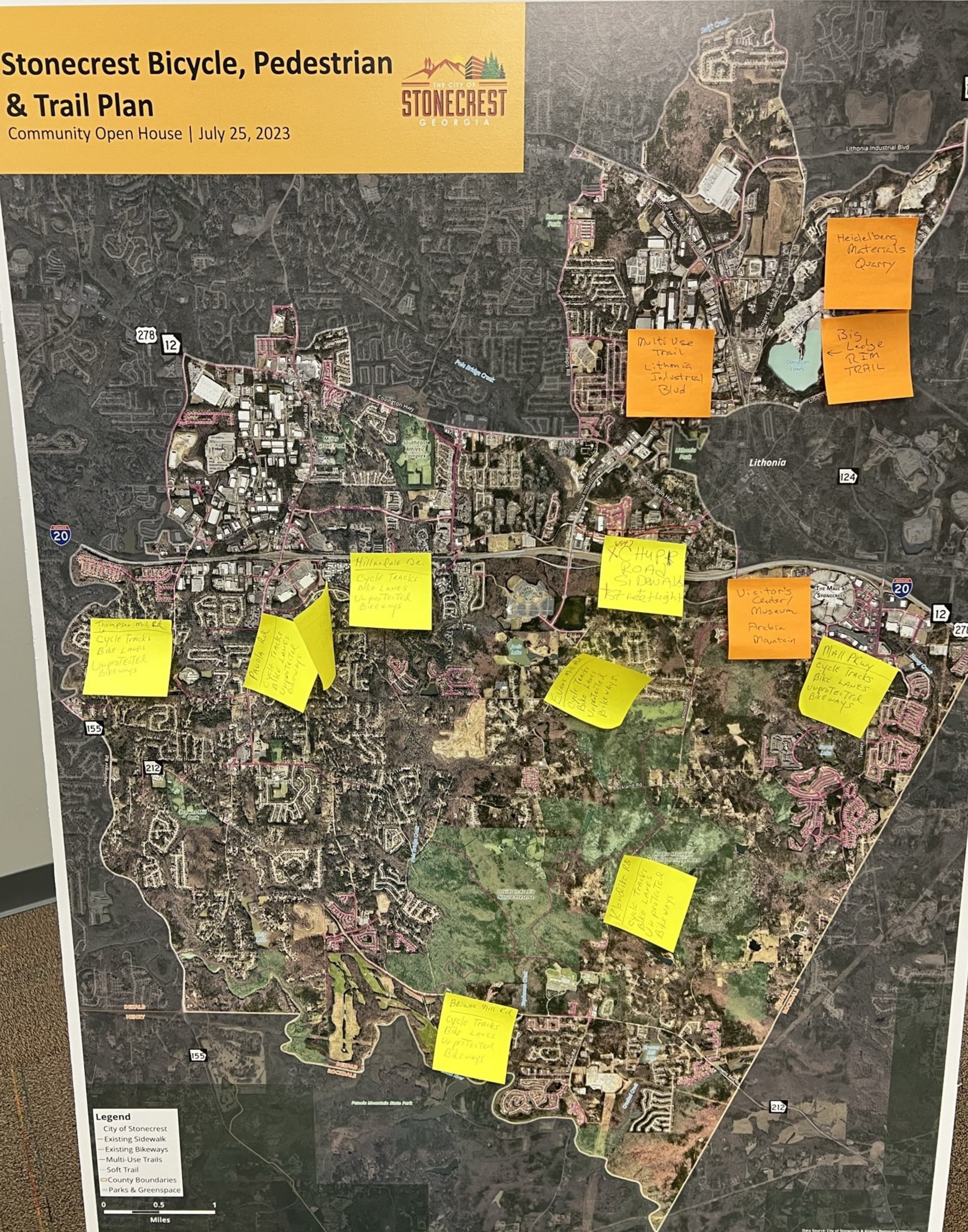


# Stonecrest Bicycle, Pedestrian & Trail Plan

Community Open House | July 25, 2023



Thompson Mill Rd  
Cycle Tracks  
Bike Lanes  
Unprotected  
Bike ways

Pavola Rd  
Cycle Tracks  
Bike Lanes  
Unprotected  
Bike ways

Hillside Rd  
Cycle Tracks  
Bike Lanes  
Unprotected  
Bike ways

Chupp  
ROAD  
SIDEWALK  
STREETLIGHT

Visitor's  
Center/  
Museum  
Archie  
Mountain

Mall Park  
Cycle Tracks  
Bike Lanes  
Unprotected  
Bike ways

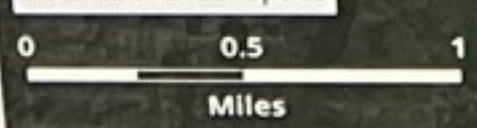
Kilbuck Rd  
Cycle Tracks  
Bike Lanes  
Unprotected  
Bike ways

Brown Mill Rd  
Cycle Tracks  
Bike Lanes  
Unprotected  
Bike ways

Heidelberg  
Materials  
Quarry

Big  
Ledge  
RIM  
TRAIL

- Legend**
- City of Stonecrest
  - Existing Sidewalk
  - Existing Bikeways
  - Multi-Use Trails
  - Soft Trail
  - County Boundaries
  - Parks & Greenspace





# Stonecrest Bicycle, Pedestrian & Trail Plan

Community Open House | July 25, 2023



## FUTURE INVESTMENTS - FACILITY TYPES

What types of facilities do you think the City should invest in to improve biking and walking?

Place one sticker per column, to indicate how important each of the strategies are to you.

	<div>Roadway Crossing Infrastructure: Crosswalks, signalized mid-block pedestrian crossings, or other improvements to help pedestrians more easily and safely navigate roadways.</div> <div></div>	<div>Unprotected Bikeways: Roadway markings that designate space exclusively for cyclists. Typically placed immediately adjacent to vehicle lanes.</div> <div></div>	<div>Cycle Tracks/Protected Bike Lanes: Wide, buffered bike lanes on the side of a roadway. Usually built with some type of barrier to protect bicyclists from the adjacent roadway.</div> <div></div>	<div>Sidewalks: Pathways intended exclusively for people traveling on foot (i.e., walking or running). Typically built behind a curb, adjacent to a street with a narrow buffer.</div> <div></div>	<div>Multi-use Paths: Wide pathways for nonvehicular travel including walking and bicycling. These may be next to a roadway (behind a curb) or along a separate path.</div> <div></div>
Not for Me					
Not Sure					
Love It!	<div></div>	<div></div>	<div></div>	<div></div>	<div></div>



# Stonecrest Bicycle, Pedestrian & Trail Plan

Community Open House | July 25, 2023



## PRIORITY STRATEGIES

As Stonecrest thinks about improving the biking and walking network in the future, how important are each of the following strategies to you?

Place one sticker per column, to indicate how important each of the strategies are to you.

	Improving Bicycle/ Pedestrian Connections within Stonecrest	Developing Bicycle/Pedestrian Connections with Surrounding Communities	Improving Bicycle/ Pedestrian Access to Schools and Parks	Developing Bicycle/ Pedestrian <b>Access to Retail Areas/Activity Centers</b> (i.e., Mall at Stonecrest)	Increasing Opportunities for Recreational Biking/ Walking	Increasing Opportunities for Biking/Walking as Means of Transportation	Filling Sidewalk Gaps	Providing Bicycle/ Pedestrian Connections to Bus Stops
Very Important								
Somewhat Important								
Neutral								
Not that Important								
Not at All Important								